

INTERIOR LIVING

TRENDS



VOLUME 29 NO 7 US\$10.95



DISPLAY UNTIL 10.14.13

search trendsideas.com





Let's take Manhattan

This apartment captures all the excitement and sparkle of the city with glittering surfaces, vibrant color and exotic textures – each room has its own distinct personality

When one of the most exciting cities in the world lies just outside your windows, one interior design approach would be to welcome the razzmatazz into your home.

This was the desired outcome when interior designer Billy Beson and architect Andrea Swan created this Upper West Side unit. The home is in an apartment tower designed by architect Robert AM Stern, with Art Deco architectural references.

Swan made minor changes to the as-built layout and designed feature beam ceilings complete with integrated pockets

for window treatments. The architect also created the millwork in simple steppings, reminiscent of Art Deco design, offering interest without detracting from the decor.

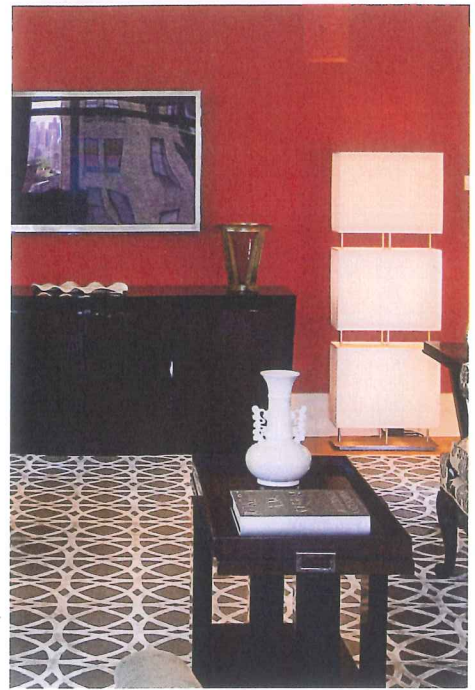
Trusted by the owners to follow his own vision, Beson went ahead to create a sparkling interior that reflects the spirit of Manhattan, with the sense of exhilaration starting at the entry.

These pages: A wealth of shiny, reflective surfaces in this Manhattan apartment captures the glamour and excitement of the big city after dark.

"Initially, there wasn't an arrival space so I created one in the long, narrow hall that goes to the salon one way, and to children's bedrooms the other. Materials were key to creating a sense of arrival.

"For the walls, I chose a Maya Romanoff silver leaf wallcovering with crystal beads attached. To avoid unsightly seams, I had the 30in-wide strips turned on their sides so they run along the wall lengthways – this is called railroading – and introduced horizontal stainless steel strips to conceal the seams."





Left: The silver pattern in the wool and silk area rug reflects the light – just one of the ways this apartment catches the eye. The custom walnut dining table has curved stainless steel inlays that echo the pattern on the rug.

Top: A sculptural corner lamp brings diffuse light into the space. The designer says it is better to have several light sources for an effective night interior.

Above: Oversized wing chairs swivel so guests can turn to take in the apartment's main feature – the big city views.







Alongside the shimmering horizontal panels, Beson replaced standard closet doors with a sliding aluminum door with an abstract pattern ground into its surface.

"There was no room for a cabinet in the hall so I created a multilayered fixture or sculpture which has drawers on three sides, for storing phones, keys and so on."

A mirror behind this doubles the size of the hallway visually. Beson chose silk runners to lead both ways down the hall. These were designed in sections to avoid a rambling feel, the designer says.

In the salon, comprising living and dining areas, the walls have two distinct treatments – one a pearlescent shell tile, catching the twinkle of city lights, the other a red vinyl wallcovering, picking up on the vibrancy of the Big Apple. The shell tiles are bordered by millwork that extends from the door opening. This approach allowed the red vinyl to run round the room and avoided the light, shiny tiles seeming to float into the white ceiling.

"The decor has an Art Deco-revival feel with elements like the curved bar, but

it is also an eclectic ensemble," says Beson. "Two red lacquer and ostrich-skin dining chairs connect with the wall tone and also add texture. As there is a fair amount of pattern, I designed the other dining chairs in a stripe – exciting, but not too busy. The camel-back sofa is finished in damask linen, while the pillows are in silk.

"Separated from the living spaces and master bedroom by the hall, the children's rooms have individual colorways, while the master bedroom offers what all city dwellers need occasionally – tranquility."



Interior designer: Billy Beson ASID, CID (Minneapolis, MN)

Architect: Andrea Swan, Andrea Swan Architecture (Minneapolis, MN)

Flooring: White oak, herringbone pattern

Surface treatments: Foyer – glass bead wallcovering by Maya Romanoff, ceiling in metallic silver vinyl wallcovering; salon – Bon Aire Ruby vinyl wall covering by Wolf Gordon, Pearlescent shell in Jewel Box style by Stark; master bedroom – pale yellow pleated fabric by Weitzner, Benjamin Moore paint

Furniture: Salon – sofa by EJ Victor, wing chairs by Edward Ferrell + Lewis Mittman, all with Stark fabric, ottoman by J Robert Scott with lambskin fabric, bar by

Lee Weitzman, round end table by Powell & Bonnell, dining room chairs, red, by Edward Ferrell + Lewis Mittman in Valtezk fabric, dining room upholstered chairs and banquet by J Robert Scott in Romo fabric, mahogany dining table by New Classics; master bedroom: CR Currin bed, Powell & Bonnell nightstand
Salon lighting: Cascade luminaire by Todd Rugee

Story by Charles Moxham
Photography by Jamie Cobel

For a video and images online go to

[▶ trendsideas.com/us2907p24](http://trendsideas.com/us2907p24)

Preceding pages: Height of refinement – the crystal chandelier in the salon has its own mount, worked into the ceiling beam design by Andrea Swan. The bar, one of the more overtly Art Deco pieces, allows drinks to be served from front or behind.

Facing page top and above: The children's bedrooms have their own distinct flavors, while retaining a level of formality.

Above: The master bedroom is peaceful but still has its share of subtle textures. The walls are finished in a pleated, pale cream fabric.